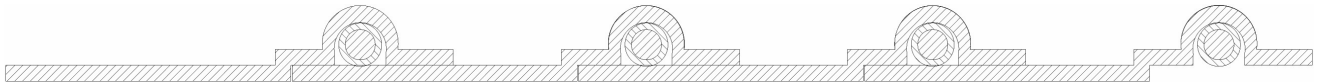




ENGINEERING AND TECHNICAL DATA
Flexadux® PU Flex-Thane® HD
March 2007

Construction: Heavy weight polyurethane hose reinforced with a coated spring steel wire helix (sizes 14" I.D. & above not available with a coated wire)



Product Features:

- " Great abrasion resistance & high tear strength
- " Superior chemical resistance
- " Excellent flexibility
- " Designed for applications with wide temperature ranges
- " Ideal for severe service applications
- " Very good low temperature flexibility
- " Clear is manufactured with FDA acceptable materials
- " Available in metric sizes, consult sales team on pricing & minimums
- " Wall Thickness = .035" (2" to 3 1/2"), .045" (4" & above)

Applications: Recommended for light bulk material handling applications.

Temperature Range: -65°F to 225°F

Diameter Range (Inches I.D.): 2.00-24.00 Inch I.D.

Standard Length: 25 Feet

I.D. Tolerances (Inches): To 8 Inch: -0.00 to +0.125 Inch
8 Inch and over: -0.00 to +0.250 Inch

Standard Color: Clear and Black (available in Translucent Blue)

End Finish: Plain Cut

Markets: "Abrasion Resistance "Agricultural "Air Duct Cleaning "Bridge Cleaning Filtering "Chemical Fumes "Concrete Transport "Cotton Pickers "Duct Cleaning "Dust Collection "Fertilizer Broadcasting "Foundry Sand Transfer "Furnace Duct Cleaning "Glass Clinching "Granule Transport "Grinders "Hull Sanding Equipment "Industrial "Industrial Vacuum Cleaners "Lawn & Leaf Collection "Material Handling "Off-Road "Paper Mills "Paper Trim Conduit "Peat Moss Vacuum "Plastic Pellet Transfer "Powder & Bulk "Sand Blasting "Sand & Gravel Suction "Sheet Metal "Shredders "Sprayers "Starch Transfer "Straw Blowing "Street & Parking Lot Sweepers "Textile Mills "Woodworking/Furniture Industries



A SCHAUBURG HOSE TECHNOLOGY COMPANY

1510 Armstrong Road, P.O. Box 4275
Warsaw, IN 46581-4275

Telephone 574-267-7909 • Toll Free 800-343-0428 • Fax 574-269-7491 • Toll Free Fax 800-382-8464
sales@flexaust.com • www.flexaust.com



ENGINEERING AND TECHNICAL DATA

Flexadux[®] PU Flx-Thane[®] HD

(Page 2)

March 2007

SIZE INSIDE DIMENSION (INCHES)	APPROXIMATE WEIGHT (LBS./FT.)	MINIMUM CENTERLINE BEND RADIUS (INCHES)	COMPRESSION RATIO	MAXIMUM RECOMMENDED NEGATIVE PRESSURE (IN./HG.)	MAXIMUM RECOMMENDED POSITIVE PRESSURE (PSI)
2	.35	2	2:1	29	32
3	.55	3	2:1	29	32
4	.9	3.5	2:1	29	30
5	1.1	4	2:1	17	30
6	1.2	5	2:1	15	24
7	1.4	7	2:1	12	22
8	1.7	8	2:1	9	20
10	1.9	9	2:1	4	17
12	2.4	11	2:1	2.5	14
14*	3.2	13	2:1	3.5	12
16*	3.7	15	2:1	2.5	11
18*	4.1	17	2:1	1.5	10
20*	4.6	19	2:1	1	9

*Wire not coated

Note: Technical data based on 2 ft. straight lengths of hose @ 72° F.

Disclaimer: The proper use and maintenance of hose and/or duct manufactured by Flexaust is the sole responsibility of the purchaser and ultimate user of the product. This information is presented as a general guide only. The number of variables which can be present in any application make firm recommendations impossible. Adequate testing under actual service conditions is necessary to properly establish suitability. We take pride in the quality of all Flexaust products and we welcome comments and suggestions from our customers.



A **SCHAUENBURG** HOSE TECHNOLOGY COMPANY

1510 Armstrong Road, P.O. Box 4275
Warsaw, IN 46581-4275

Telephone 574-267-7909 • Toll Free 800-343-0428 • Fax 574-269-7491 • Toll Free Fax 800-382-8464
sales@flexaust.com • www.flexaust.com