

Preformed Clamping Systems



As industrial hose made of stiffer, thinner, thermoplastics replace soft, spongy, thick-walled rubber, a new generation of hose clamps has been developed to prevent leak problems.

The **BAND-IT Jr. Smooth I.D. clamp** is manufactured in a wide variety of widths, sizes and materials that provide a uniform, gap-free, inside diameter with the same strong holding power of the standard BAND-IT Jr. clamp.



The smooth inside diameter produces a uniform clamping surface to prevent leak paths while the lower profile reduces the risk of snags when dragging industrial hose assemblies.



BAND-IT Jr.'s are vibration resistant and require no hammering or crimping. They are automatically locked in one simple lever movement.

BAND-It Jr. clamps are available in type 201 and galvanized carbon steel in 5 different widths. Other materials are available on special order.

Clamp	Clamp I.D.		Band Thickness		Band Width	
	In	mm	In	(mm)	In	(mm)
<i>BAND-IT Jr. Smooth I.D.</i>	13/16	20.6	.020	.51	1/4	6.4
	1	25.4	.020	.51	1/4	6.4
	13/8	34.9	.020	.51	1/4	6.4
	1 1/2	38.1	.020	.51	1/4	6.4
	2	50.8	.020	.51	1/4	6.4
	2 1/2	63.5	.020	.51	1/4	6.4
	2 3/4	69.9	.020	.51	1/4	6.4
	3	76.2	.020	.51	1/4	6.4
	3 1/2	88.9	.020	.51	1/4	6.4
	4	101.6	.020	.51	1/4	6.4
	4 1/2	114.3	.020	.51	1/4	6.4
	13/16	20.6	.025	.64	3/8	9.5
	1	25.4	.025	.64	3/8	9.5
	13/8	34.9	.025	.64	3/8	9.5
	2	50.8	.025	.64	3/8	9.5
	2 1/2	63.5	.025	.64	3/8	9.5
	3	76.2	.025	.64	3/8	9.5
	3 1/2	88.9	.025	.64	3/8	9.5
	4	101.6	.025	.64	3/8	9.5
	1	25.4	.030	.76	1/2	12.7
	1 1/4	31.8	.030	.76	1/2	12.7
	1 1/2	38.1	.030	.76	1/2	12.7
	1 3/4	44.5	.030	.76	1/2	12.7
	2	50.8	.030	.76	1/2	12.7
	2 1/2	63.5	.030	.76	1/2	12.7
	2 3/4	69.9	.030	.76	1/2	12.7
	3	76.2	.030	.76	1/2	12.7
	3 1/2	88.9	.030	.76	1/2	12.7
4	101.6	.030	.76	1/2	12.7	
1 1/2	38.1	.030	.76	5/8	15.9	
1 3/4	44.5	.030	.76	5/8	15.9	
2	50.8	.030	.76	5/8	15.9	
2 1/4	57.2	.030	.76	5/8	15.9	
2 1/2	63.5	.030	.76	5/8	15.9	
2	50.8	.030	.76	3/4	19.1	
2 3/4	69.9	.030	.76	3/4	19.1	
3	76.2	.030	.76	3/4	19.1	
3 1/2	88.9	.030	.76	3/4	19.1	
4	101.6	.030	.76	3/4	19.1	
4 1/2	114.3	.030	.76	3/4	19.1	
5	127.0	.030	.76	3/4	19.1	
5 1/4	133.4	.030	.76	3/4	19.1	
6	152.4	.030	.76	3/4	19.1	
6 1/2	165.1	.030	.76	3/4	19.1	
7	177.8	.030	.76	3/4	19.1	
8	203.2	.030	.76	3/4	19.1	
<i>BAND-IT Jr.</i>	3/4	19.1	.020	.51	1/4	6.4
	1	25.4	.020	.51	1/4	6.4
	13/8	34.9	.020	.51	1/4	6.4
	1 1/2	38.1	.020	.51	1/4	6.4
	2	50.8	.020	.51	1/4	6.4
	2 3/4	69.9	.020	.51	1/4	6.4
	3	76.2	.020	.51	1/4	6.4
	3 1/2	88.9	.020	.51	1/4	6.4
	4 1/2	114.3	.020	.51	1/4	6.4
	13/16	20.6	.026	.64	3/8	9.5
	1	25.4	.026	.64	3/8	9.5
	13/8	34.9	.026	.64	3/8	9.5
	2	50.8	.026	.64	3/8	9.5
	3	76.2	.026	.64	3/8	9.5
	3 1/4	82.5	.026	.64	3/8	9.5
	4	101.6	.026	.64	3/8	9.5
	1	25.4	.030	.76	1/2	12.7
	13/8	31.8	.030	.76	1/2	12.7
	1 3/4	44.5	.030	.76	1/2	12.7
	2 3/4	69.9	.030	.76	1/2	12.7
	4	101.6	.030	.76	1/2	12.7

316 S.S. Cat. No.	Type of Steel 201 S.S. Cat. No.	Galv. Carbon Cat. No.	Weight Lbs Kg		Packaging	Application Tools	Applications
NA	◆JS240	NA	2.0	0.9	100/box	IT2000 ◆S350 J020 ◆S750 ◆C001 & J001 C002	Hose Boots
NA	◆JS242	NA	2.1	1.0			
NA	◆JS241	NA	2.5	1.1			
NA	◆JS252	NA	2.6	1.2			
NA	◆JS253	NA	3.2	1.5			
NA	◆JS220	NA	3.7	.7			
NA	JS256	NA	3.8	1.7			
NA	JS244	NA	4.2	1.9			
NA	JS257	NA	4.6	2.1			
NA	JS258	NA	5.3	2.4			
NA	◆JS259	NA	5.7	2.6			
JS401	◆JS201	◆JS301	3.6	1.6			
NA	◆JS243	◆JS343	3.9	1.8			
JS402	◆JS202	◆JS302	5.0	2.3			
JS445	◆JS245	◆JS345	5.9	2.7			
JS421	JS221	JS321	6.8	3.1			
NA	JS246	JS346	7.5	3.4			
JS455	JS255	JS355	8.6	3.9			
JS448	JS248	JS348	9.5	4.3			
JS403	◆JS203	◆JS303	6.5	3.0			
JS404	◆JS204	◆JS304	7.2	3.3			
NA	◆JS231	JS331	8.1	3.7			
NA	◆JS236	◆JS336	8.7	4.0			
JS437	◆JS237	JS337	9.4	4.3			
JS433	◆JS233	◆JS333	10.8	4.9			
NA	◆JS230	◆JS330	11.3	5.1			
JS434	◆JS234	JS334	12.2	5.5			
JS447	◆JS247	JS347	13.6	6.2			
JS449	JS249	JS349	14.9	6.8			
JS405	◆JS205	◆JS305	10.4	4.7			
JS406	◆JS206	◆JS306	11.3	5.1			
JS407	◆JS207	◆JS307	12.2	5.5			
JS408	◆JS208	◆JS308	13.3	6.0			
JS409	◆JS209	◆JS309	13.9	6.3			
JS427	JS227	JS327	14.9	6.8			
JS410	◆JS210	◆JS310	9.2	4.2			
JS411	◆JS211	◆JS311	9.7	4.4			
JS412	◆JS212	◆JS312	10.8	4.9			
JS413	◆JS213	◆JS313	6.1	2.8			
JS414	◆JS214	◆JS314	6.7	3.0			
JS415	◆JS215	◆JS315	7.2	3.3			
JS470	◆JS270	JS370	7.3	3.3			
JS416	◆JS216	◆JS316	8.2	3.7			
NA	JS217	◆JS317	9.2	4.2			
NA	◆JS218	◆JS318	10.2	4.6			
NA	◆JS219	JS319	11.0	5.0			
NA	◆J240	NA	.9	.9			
NA	◆J242	NA	2.1	1.0			
NA	◆J241	NA	2.5	1.1			
NA	◆J252	NA	2.6	1.2			
NA	◆J253	NA	3.2	1.5			
NA	◆J256	NA	3.8	1.7			
NA	◆J244	NA	4.2	1.9			
NA	J257	NA	4.6	2.1			
NA	◆J259	NA	5.7	2.6			
NA	◆J201	◆J301	3.6	1.6			
NA	◆J243	◆J343	3.9	1.8			
NA	◆J202	◆J302	4.7	2.1			
NA	◆J245	◆J345	5.5	2.5			
NA	J246	J346	7.5	3.4			
NA	J255	NA	8.2	3.7			
NA	J248	NA	9.5	4.3			
NA	◆J203	◆J303	6.5	3.0			
NA	◆J204	◆J304	7.2	3.3			
NA	◆J236	J336	8.7	4.0			
NA	J230	◆J330	11.3	5.1			
NA	J249	NA	14.9	6.8			
NA	◆J240	NA	.9	.9			
NA	◆J242	NA	2.1	1.0			
NA	◆J241	NA	2.5	1.1			
NA	◆J252	NA	2.6	1.2			
NA	◆J253	NA	3.2	1.5			
NA	◆J256	NA	3.8	1.7			
NA	◆J244	NA	4.2	1.9			
NA	J257	NA	4.6	2.1			
NA	◆J259	NA	5.7	2.6			
NA	◆J201	◆J301	3.6	1.6			
NA	◆J243	◆J343	3.9	1.8			
NA	◆J202	◆J302	4.7	2.1			
NA	◆J245	◆J345	5.5	2.5			
NA	J246	J346	7.5	3.4			
NA	J255	NA	8.2	3.7			
NA	J248	NA	9.5	4.3			
NA	◆J203	◆J303	6.5	3.0			
NA	◆J204	◆J304	7.2	3.3			
NA	◆J236	J336	8.7	4.0			
NA	J230	◆J330	11.3	5.1			
NA	J249	NA	14.9	6.8			
NA	◆J240	NA	.9	.9			
NA	◆J242	NA	2.1	1.0			
NA	◆J241	NA	2.5	1.1			
NA	◆J252	NA	2.6	1.2			
NA	◆J253	NA	3.2	1.5			
NA	◆J256	NA	3.8	1.7			
NA	◆J244	NA	4.2	1.9			
NA	J257	NA	4.6	2.1			
NA	◆J259	NA	5.7	2.6			
NA	◆J201	◆J301	3.6	1.6			
NA	◆J243	◆J343	3.9	1.8			
NA	◆J202	◆J302	4.7	2.1			
NA	◆J245	◆J345	5.5	2.5			
NA	J246	J346	7.5	3.4			
NA	J255	NA	8.2	3.7			
NA	J248	NA	9.5	4.3			
NA	◆J203	◆J303	6.5	3.0			
NA	◆J204	◆J304	7.2	3.3			
NA	◆J236	J336	8.7	4.0			
NA	J230	◆J330	11.3	5.1			
NA	J249	NA	14.9	6.8			

Preformed
Clamping Systems

◆ Most popular items with immediate availability from the Denver or Pennsylvania warehouse.
Will ship within 3 working days. Call for availability on other products.

Preformed Clamping Systems



BAND-IT Center Punch clamps are locked with a standard conical punch, ensuring a strong, powerful lock for reliable clamping. Both 201 stainless steel and galvanized carbon steel CP clamps are manufactured with 201 stainless steel buckles to provide maximum locking strength.

Center Punch clamps can be installed with BAND-IT's T300 or S038 hand tools. The new, electric-powered IT9000 is the ideal solution to high-speed production requirements.



The Universal Clamp is a single wrap, preformed, smooth I.D. clamp that can be fastened with either a Tie-Lok or Ultra-Lok termination. Use the A920 or IT1000 for Tie-Lok. For Ultra-Lok, use the A940 or IT3000 tools.



Worm Gear Clamps

A quality screwdriver type clamp with mechanical interlock eliminating spot weld for greater strength and protection from corrosion. The extra wide band, 9/16", provides more compression area. Band made of 301 S.S.

Clamp	Clamp I.D.		Band Thickness		Band Width		Range Clamp Diameter			
	In	(mm)	In	(mm)	In	(mm)	Inches Min	Inches Max	mm Min	mm Max
<i>BAND-IT Jr.</i> 201 S.S. or GCS	1 1/2	38.1	.030	.76	5/8	15.9				
	1 3/4	44.5	.030	.76	5/8	15.9				
	2	50.8	.030	.76	5/8	15.9				
	2 1/4	57.2	.030	.76	5/8	15.9				
	2 1/2	63.5	.030	.76	5/8	15.9				
	2	50.8	.030	.76	3/4	19.1				
	2 1/2	63.5	.030	.76	3/4	19.1				
	2 3/4	69.9	.030	.76	3/4	19.1				
	3	76.2	.030	.76	3/4	19.1				
	3 1/2	88.9	.030	.76	3/4	19.1				
	4	101.6	.030	.76	3/4	19.1				
	4 1/2	114.3	.030	.76	3/4	19.1				
	5	127.0	.030	.76	3/4	19.1				
	5 1/4	133.4	.030	.76	3/4	19.1				
	6	152.4	.030	.76	3/4	19.1				
7	177.8	.030	.76	3/4	19.1					
8	203.2	.030	.76	3/4	19.1					
<i>Center Punch</i> 201 S.S. or GCS All buckles 201 S.S.	1 3/16	20	.025	.64	3/8	9.5				
	1 3/8	35	.025	.64	3/8	9.5				
	1	25	.025	.64	5/8	16				
	1 1/4	32	.025	.64	5/8	16				
	1 1/2	38	.025	.64	5/8	16				
	1 3/4	44	.025	.64	5/8	16				
	2	51	.025	.64	5/8	16				
	2 1/4	57	.025	.64	5/8	16				
	2 1/2	64	.025	.64	5/8	16				
	2 3/4	70	.025	.64	5/8	16				
	3	76	.025	.64	5/8	16				
	3 1/2	89	.025	.64	5/8	16				
	4	102	.025	.64	5/8	16				
	4 1/2	114	.025	.64	5/8	16				
	5	127	.025	.64	5/8	16				
6	152	.025	.64	5/8	16					
7	178	.025	.64	5/8	16					
8	203	.025	.64	5/8	16					
<i>Universal Clamp</i> 201 S.S.	1	25	.015	.38	1/4	6.35				
	1 1/2	38	.015	.38	1/4	6.35				
	2	51	.015	.38	1/4	6.35				
	2 1/2	64	.015	.38	1/4	6.35				
	3	76	.015	.38	1/4	6.35				
	3 1/2	89	.015	.38	1/4	6.35				
	4	102	.015	.38	1/4	6.35				
4 1/2	114	.015	.38	1/4	6.35					
<i>Worm Gear Clamps</i> 301 S.S.			.023	.6	9/16	14	3/8	7/8	9	22
			.023	.6	9/16	14	1/16	1	11	25
			.023	.6	9/16	14	1/2	1 1/8	12	28
			.023	.6	9/16	14	1/2	1 1/4	12	32
			.023	.6	9/16	14	3/4	1 1/2	19	38
			.023	.6	9/16	14	7/8	1 3/4	22	45
			.023	.6	9/16	14	1 1/8	2	28	51
			.023	.6	9/16	14	1 3/8	2 1/4	35	57
			.023	.6	9/16	14	1 5/8	2 1/2	41	64
			.023	.6	9/16	14	1 7/8	2 3/4	48	70
			.023	.6	9/16	14	2 1/8	3	54	76
			.023	.6	9/16	14	2 5/16	3 1/4	58	83
			.023	.6	9/16	14	2 5/8	3 1/2	67	89
			.023	.6	9/16	14	2 7/8	3 3/4	73	95
			.023	.6	9/16	14	3 1/8	4	79	102
			.023	.6	9/16	14	3 1/2	4 1/2	89	114
			.023	.6	9/16	14	4	5	102	127
			.023	.6	9/16	14	4 1/2	5 1/2	114	140
			.023	.6	9/16	14	5 1/8	6	130	152
			.023	.6	9/16	14	6 1/8	7	155	178

Type of Steel		Galv. Carbon Cat. No.	Weight		Packaging	Application Tools	Applications			
S.S. Cat. No.			Lbs	Kg						
◆J205	◆J305		10.4	4.7	100/box ↓	◆S750 ◆C001 ◆C002 ↓	Hose Boots ↓			
◆J206	◆J306		11.3	5.1						
◆J207	◆J307		12.2	5.5						
◆J208	◆J308		13.3	6.0						
◆J209	◆J309		13.9	6.3						
◆J227	J327		14.9	6.8						
J229	J329		17.0	7.7						
◆J210	◆J310		9.2	4.2						
◆J211	◆J311		9.7	4.4						
◆J212	◆J312		10.8	4.9						
◆J213	◆J313		6.1	2.8	50/box ↓					
◆J214	◆J314		6.7	3.0						
◆J215	◆J315		7.2	3.3						
J270	J370		7.4	3.4						
◆J216	◆J316		8.2	3.7						
◆J218	J318		10.2	4.6						
J219	J319		11.0	5.0						
◆CP3S	◆CP03		3.6	1.6				100/box ↓	◆T300 ◆S038 IT9000 ↓	Hose ↓
◆CP311S	◆CP311		4.6	2.1						
◆CP4S	◆CP04		8.3	3.8						
◆CP5S	◆CP05		8.7	4.0						
◆CP6S	◆CP06		9.7	4.4						
◆CP7S	◆CP07		10.6	4.8						
◆CP8S	◆CP08		11.5	5.2						
◆CP9S	◆CP09		12.6	5.7						
◆CP10S	◆CP10		6.8	3.1						
◆CP11S	◆CP11		7.3	3.3						
◆CP12S	◆CP12		7.7	3.5	50/box ↓					
◆CP14S	◆CP14		8.7	4.0						
◆CP16S	◆CP16		4.9	2.2						
◆CP18S	◆CP18		5.5	2.5						
◆CP20S	◆CP20		5.9	2.7						
◆CP24S	◆CP24		6.8	3.1						
◆CP28S	◆CP28		7.4	3.4						
◆CP32S	◆CP32		8.2	3.7						
◆JU242	-		1.2	.54				100/box ↓	◆A920 IT1000 ◆A940 IT3000 ↓	Boots Sleeves ↓
◆JU252	-		1.4	.64						
JU253	-		1.7	.77						
JU254	-		1.9	.86						
JU256	-		2.2	1.00						
JU257	-		2.4	1.09						
◆JU258	-		2.6	1.18						
◆JU259	-		2.7	1.23						
◆V006			.5	.2	10/box ↓	Screw driver ↓	General Fastening where removal or retightening without special tools is required			
◆V008			.5	.2						
◆V010			.6	.3						
◆V012			.6	.3						
◆V016			.6	.3						
◆V020			.6	.3						
◆V024			.7	.3						
◆V028			.7	.3						
◆V032			.8	.3						
◆V036			.8	.4						
◆V040			.8	.4						
◆V044			.9	.4						
◆V048			.9	.4						
◆V052			.9	.4						
◆V056			1.0	.4						
◆V064			1.1	.5						
◆V072			1.3	.6						
◆V080			1.3	.6						
◆V088			1.4	.6						
◆V104			1.5	.7						

◆ Most popular items with immediate availability from the Denver or Pennsylvania warehouse.
Will ship within 3 working days. Call for availability on other products.



Revolutionary Strength, Versatility and Reliability

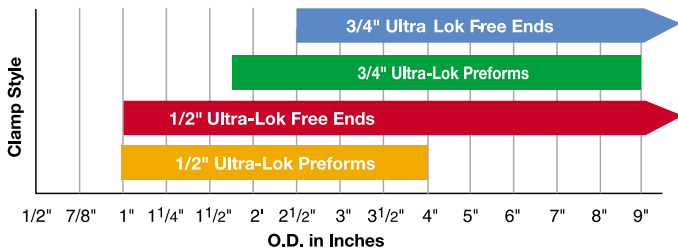
Ultra-Lok is the ultimate band clamping system. It includes a complete selection of convenient preformed clamps, a series of versatile free-end lengths and a choice of fast, powerful application tools.

Whatever your requirements, Ultra-Lok provides a fast, accurate, consistent clamp made from 1/4 hard, high-tensile 201 stainless steel for unequalled strength and reliability.

Preformed or free-end, the powerful, portable UL9010 tool lets you apply clamps anywhere there's an AC outlet and our new IT9000 bench tool has no equal when it comes to accuracy and repeatability.

The rechargeable, battery-powered UL4000 tool is ideal for portable requirements.

Ultra-Lok's smooth I.D. seals assemblies tight with a gap-free, 360° seal and the electric tools quickly form the patented Ultra-Lok for consistent, reliable clamping.



Ultra-Lok Tools

Cat. No.	Description	Pkg. Qty.	Weight Lbs	Weight Kg
UL4000	Ultra-Lok Cordless Tool (complete)	1	14.6	6.64
UL9010	Ultra-Lok Electric Tool	1	18.3	8.32
ULK200	Adapter Kit 1/2"-3/4" Blade Kit Replacement	1	.07	.03
MO9387	1/2" Shear Plate for 1/2" UL Clamps	1	.01	-

Ultra-Lok Smooth I.D. Preformed Clamps*

Type 201 1/4 Hard Stainless Steel Band Thickness: .030" (.76mm)

Cat. No.	Clamp I.D. In.	Clamp I.D. mm	Band Width In.	Band Width mm	Pkg. Wt. Lbs.	Pkg. Wt. Kg.	Pkg. Qty.
◆UL279	1 1/2	38.1	1/2	12.7	9.1	4.1	100
◆UL283	2	50.8	1/2	12.7	10.6	4.8	100
◆UL286	2 3/4	69.9	1/2	12.7	12.7	5.8	100
◆UL291	4	101.6	1/2	12.7	16.7	7.6	100
◆UL227	2	50.8	3/4	19.1	14.9	6.8	100
◆UL210	2 3/4	69.9	3/4	19.1	9.2	4.2	50
◆UL211	3	76.2	3/4	19.1	9.7	4.4	50
◆UL212	3 1/2	88.9	3/4	19.1	10.8	4.9	50
◆UL213	4	101.6	3/4	19.1	6.1	2.8	25
◆UL214	4 1/2	114.3	3/4	19.1	6.7	3.0	25
◆UL215	5	127.0	3/4	19.1	7.2	3.3	25
◆UL270	5 1/4	139.7	3/4	19.1	7.3	3.3	25
◆UL216	6	152.4	3/4	19.1	8.2	3.7	25
◆UL217	6 1/2	165.1	3/4	19.1	10.2	4.6	25
◆UL218	7	177.8	3/4	19.1	10.6	4.8	25
◆UL219	8	203.2	3/4	19.1	11.0	5.0	25
◆UL228	9	228.6	3/4	19.1	5.5	2.5	10

Ultra-Lok Free End Clamps*

Type 201 1/4 Hard Stainless Steel Band

Band Width: 3/4" (19.1 mm)

Cat. No.	Diameter		Length Bands/Tote		Weight	
	Sgl. Wrap In.	mm	In.	mm	Qty.	Lbs Kg
◆UL2020	4.8	121.9	2.3	58.4	20 508	30 4.3 2.0
◆UL2024	5.5	139.7	2.6	66.0	24 610	25 4.3 2.0
◆UL2028	6.0	152.4	3.5	88.9	28 711	21 4.2 2.0
◆UL2036	9.9	251.5	4.8	121.9	36 914	33 8.1 3.7
◆UL2052	15.0	381.0	7.3	185.4	52 1321	23 8.2 3.7

Sizes above 36" are in 100' rolls. Smaller sizes are in 50' rolls.

Other sizes available up to 120" - call Denver

Band Width: 1/2" (12.7mm)

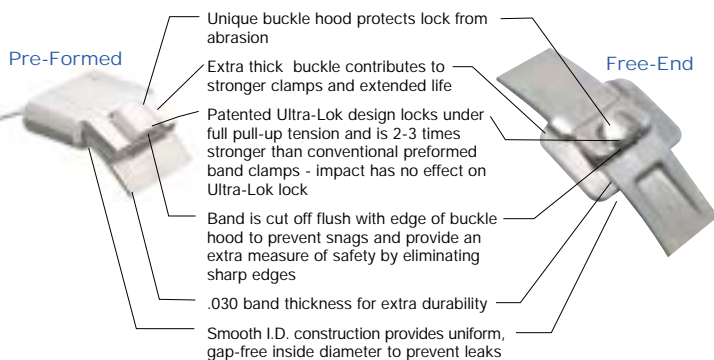
Cat. No.	Diameter		Length Bands/Tote		Weight	
	Sgl. Wrap In.	mm	In.	mm	Qty.	Lbs Kg
UL1018	3.0	76.2	-	-	18 457	50 4.1 1.9
UL1024	5.0	127.0	-	-	24 610	50 5.3 2.4
UL1028	6.0	152.4	3.0	76.2	28 711	50 6.4 2.9
UL1032	7.0	177.8	3.5	88.9	32 813	50 7.2 3.3
UL1036	8.0	203.2	4.0	101.6	36 914	50 8.0 3.6
UL1046	11.0	279.4	5.5	139.7	46 1168	25 5.9 2.7
UL1056	14.0	355.6	7.0	177.8	56 1422	25 7.1 3.2
UL1070	18.0	457.2	9.0	228.6	70 1778	25 8.5 3.9
UL1086	22.0	558.8	11.0	279.4	86 2184	25 10.2 4.6
UL1096	25.0	635.0	12.5	317.5	96 2438	25 11.2 5.1
UL1106	28.0	711.2	14.0	355.6	106 2692	25 12.7 5.8
UL1116	31.0	787.4	15.5	393.7	116 2946	25 13.3 6.0

*1/2" bands require #ULK910 for UL9010 tool

1/2" bands require #ULK200 for UL4000 tool

Patented, Smooth I.D. Buckle Design

Ultra-Lok clamps made of Type 201, 1/4 hard stainless steel for superior strength and corrosion resistance

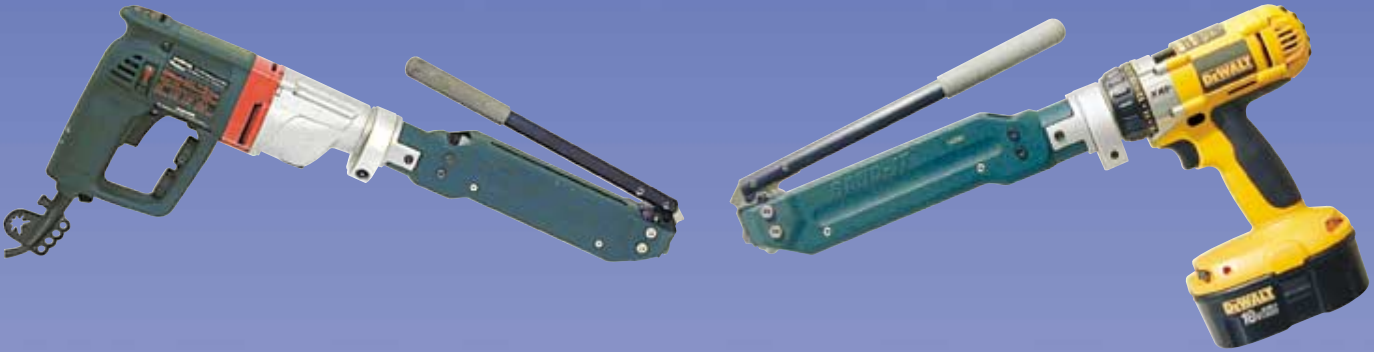


Ultra-Lok Free End Buckles

Type 201 Stainless Steel

Cat. No.	Description	Pkg. Qty.	Weight Lbs	Weight Kg
◆UB256	Used to form 3/4" Ultra-Lok Free-End Clamps	100	3.7	1.7
◆UB254	Used to form 1/2" Ultra-Lok Free-End Clamps	100	2.4	1.1

Ultra-Lok Application Tools



UL9010 Ultra-Lok Electric Tool

Ideal for hose clamping, this powerful hand-held tool can apply 1/2" and 3/4" Ultra-Lok clamps, either preformed or free-end anywhere you can plug into an AC outlet.

Adjustable speed and torque controls guarantee consistent tensioning and one-person operation saves on labor expenses.



UL4000 Rechargeable Ultra-Lok Tool

Designed for portable requirements, the UL4000 allows you to install patented Ultra-Lok clamps virtually anywhere. Without generators...without compressors...without unwieldy cords or hoses.

The UL4000's unique design allows consistent, repeatable tensioning and locking under full tension. This insures that each and every clamp will have the same strength and holding characteristics.



Is installation time critical? Field tests show that Ultra-Lok clamps can be applied four times faster than conventional band clamps.

IT9000 Electric Bench Mount Tool

The IT9000 answers the need for a user-friendly bench tool that makes a precise, repeatable assembly time after time. And to verify actual pull-up tensions, the IT9000 includes a printer port for documentation.

Features include an automatic reset, cut-off and tail ejection, a 22 inch single-pull take-up, heavy duty gearing and electronically controlled clamp installation.

For hose applications, the IT9000 quickly and easily forms assemblies that are as strong as or stronger than crimp or swage fittings at a much lower overall cost.

Interchangeable heads for 1/2" wide or greater BAND-IT Ultra-Lok, Jr. Clamps, and Center Punch clamps are available.

Video available at www.band-it-idex.com



Enter the type of clamp, clamp width and type of steel. Insert clamp tail and press foot pedal. When the programmed tension is reached, cutoff and tail ejection are automatic.